

### 1. Features

- Typical 1dB bandwidth of 17.4 MHz
- High attenuation
- Single Ended Operation
- Surface Mounted Package (SMD)

**RoHS Compliant**

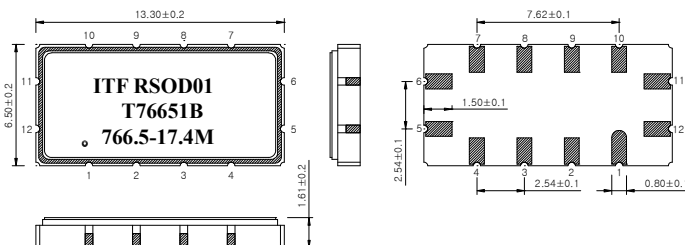
Tested by SGS Testing Korea

### 2. Electrical Specifications

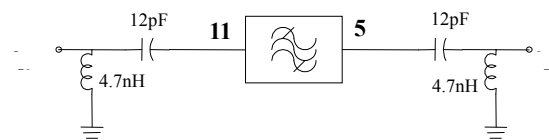
Source and Load Impedance = 50Ω

Room Temperature : +25°C		Minimum	Typical	Maximum
Center Frequency (fo)	MHz	-	766.5	-
Insertion Loss	dB	-	25.5	28.0
1dB Bandwidth	MHz	17.1	17.4	-
3dB Bandwidth	MHz	-	18.1	-
35dB Bandwidth	MHz	-	20.65	20.9
Amplitude Ripple (fo ± 8.5 MHz)	dB	-	1.0	1.5
Group Delay Variation (fo ± 8.5 MHz)	nsec	-	50	120
Absolute Delay	usec	-	1.25	-
Out of band gain	Edge ± 2.0 MHz	dB	35	42
Ultimate Rejection		dB	35	40
Temperature Coefficient of Frequency	ppm/°C <sup>2</sup>	-0.03		

### S1365 Package Dimension



### Matching Network Configuration



Dimensions shown are nominal in millimeters

Body : Al<sub>2</sub>O<sub>3</sub>

Lid : Kovar, Ni Plated

Termination : Au plating 0.3 ~ 1.0um, over a 1.27 ~ 8.89um Ni Plating

### Pin Configuration

Input	11	Ground	6, 12
Output	5	Others	Ground

### 3. Typical Performance ( at +25°C )

