

## 1. Features

- Typical 1dB bandwidth of 9.3 MHz
- High attenuation
- Single Ended Operation
- Dual In-line Package (DIP)

**RoHS Compliant**

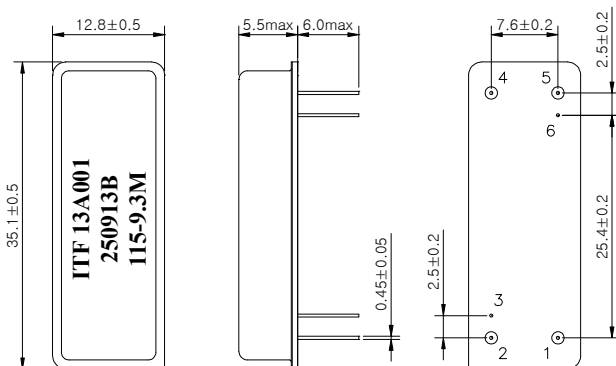
Tested by SGS Testing Korea

## 2. Electrical Specifications

Source and Load Impedance = 50Ω

Room Temperature : +25°C		Minimum	Typical	Maximum
Center Frequency (fo)	MHz	-	115.0	-
Insertion Loss	dB	-	26.5	28.0
1dB Bandwidth	MHz	9.2	9.3	-
3dB Bandwidth	MHz	-	9.45	-
35dB Bandwidth	MHz	-	10.3	10.4
Relative Attenuation	Fo ± 5.2 MHz	30	40	
	Fo ± 6.0 MHz	40	45	
	Fo ± 10.0 MHz	40	45	
	Fo ± 15.0 MHz	40	45	
Amplitude Ripple (fo ± 4.5 MHz)	dB	-	0.6	1.2
Group Delay Variation (fo ± 4.5 MHz)	nsec	-	100	200
Absolute Delay	usec	-	2.49	-
Temperature Coefficient of Frequency	ppm/°C	-	-18	-

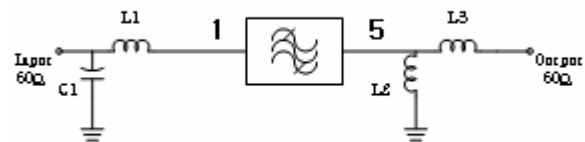
### D3512 Package Dimension



Dimensions shown are nominal in millimeters

Base : Fe(SPCC), Au plating over Ni plated  
 Cap : Cu & Cr Alloy, Ni Plated  
 Termination : Kovar, Au Plated

### Matching Schematic



L1 = 39nH, L2 = 68nH, L3 = 47nH, C1 = 43pF

Pin Configuration			
Input	1	Ground	2,4
Output	5	Others	Ground

### 3. Typical Performance ( at +25°C )

