

1. Features

- Typical 1dB bandwidth of 9.2 MHz
- High attenuation
- Single Ended Operation
- Dual In-line Package (DIP)

RoHS Compliant

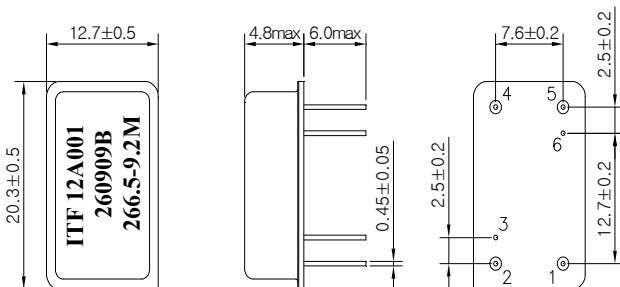
Tested by SGS Testing Korea

2. Electrical Specifications

Source and Load Impedance = 50Ω

Room Temperature : +25°C		Minimum	Typical	Maximum
Center Frequency (fo)	MHz	-	266.5	-
Insertion Loss	dB	-	28.5	30.5
1dB Bandwidth	MHz	9.1	9.27	-
3dB Bandwidth	MHz	-	9.48	-
20dB Bandwidth	MHz	-	10.11	10.2
40dB Bandwidth	MHz	-	10.38	-
Amplitude Ripple (fo ± 4.5 MHz)	dB	-	0.85	1.3
Group Delay Variation (fo ± 4.5 MHz)	nsec	-	100	200
Absolute Delay	usec	-	2.04	-
Ultimate Rejection	dB	35	40	-
Temperature Coefficient of Frequency	ppm/°C ²	-	-0.03	-

D2012 Package Dimension

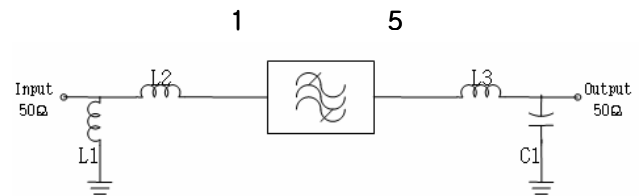


Dimensions shown are nominal in millimeters

Base : Fe(SPCC), Au plating over Ni plated
 Cap : Cu & Cr Alloy, Ni Plated

Termination : Kovar, Au Plated

Matching Network Configuration



L1 = 10nH, L2 = 10nH
L3 = 39nH, C1 = 39pF

Pin Configuration			
Input	1	Ground	2,4
Output	5	Others	Ground

3. Typical Performance (at +25°C)

