

**1. Features**

- Typical 1dB bandwidth of 9.3 MHz
- High attenuation
- Single Ended Operation
- Surface Mounted Package (SMD)

**RoHS Compliant**

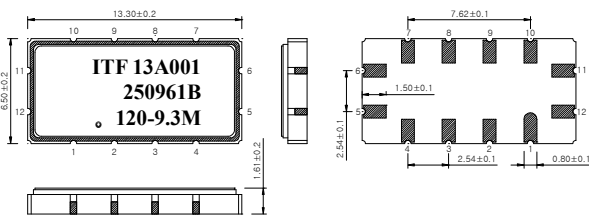
Tested by SGS Testing Korea

**2. Electrical Specifications**

Source and Load Impedance = 50Ω

Room Temperature : +25°C		Minimum	Typical	Maximum
Center Frequency (fo)	MHz	-	120.0	-
Insertion Loss	dB	-	23.0	24.5
1dB Bandwidth	MHz	9.15	9.3	-
3dB Bandwidth	MHz	-	9.58	-
40dB Bandwidth	MHz	-	10.87	11.0
Amplitude Ripple (fo ± 4.375 MHz)	dB	-	0.5	1.0
Group Delay Variation (fo ± 4.375 MHz)	nsec	-	70	180
Absolute Delay	usec	-	1.76	-
Ultimate Rejection	dB	40	48	-
Temperature Coefficient of Frequency	ppm/°C	-	-18	-

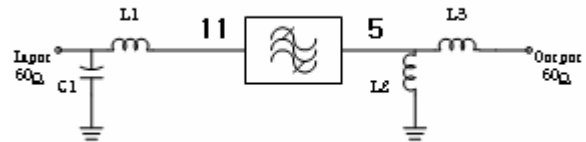
**S1365 Package Dimension**



Dimensions shown are nominal in millimeters

Body : Al<sub>2</sub>O<sub>3</sub>  
 Lid : Kovar, Ni Plated  
 Termination : Au plating 0.3 ~ 1.0um, over a 1.27 ~ 8.89um Ni Plating

**Matching Schematic**



$L1 = L2 = L3 = 39nH, C1 = 27pF$

Pin Configuration			
Input	11	Ground	6, 12
Output	5	Others	Ground

**3. Typical Performance ( at +25°C )**

