

1. Features

- Typical 1dB bandwidth of 9.3 MHz
- High attenuation
- Single Ended Operation
- Surface Mounted Package (SMD)

RoHS Compliant

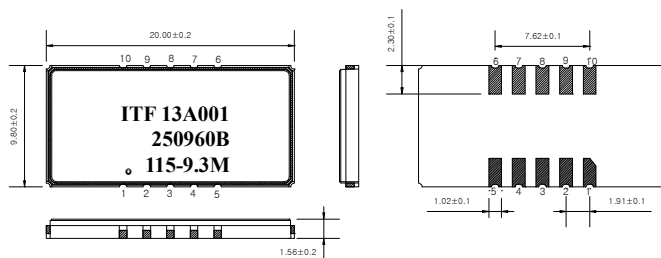
Tested by SGS Testing Korea

2. Electrical Specifications

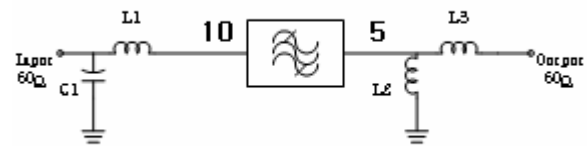
Source and Load Impedance = 50Ω

Room Temperature : +25°C		Minimum	Typical	Maximum
Center Frequency (fo)	MHz	-	115.0	-
Insertion Loss	dB	-	22.5	24.0
1dB Bandwidth	MHz	9.2	9.3	-
3dB Bandwidth	MHz	-	9.47	-
35dB Bandwidth	MHz	-	10.32	10.4
Relative Attenuation	Fo ± 5.2 MHz	30	38	
	Fo ± 6.0 MHz	40	45	
	Fo ± 10.0 MHz	40	45	
	Fo ± 15.0 MHz	40	45	
Amplitude Ripple (fo ± 4.5 MHz)	dB	-	0.6	1.2
Group Delay Variation (fo ± 4.5 MHz)	nsec	-	100	200
Absolute Delay	usec	-	2.49	-
Temperature Coefficient of Frequency	ppm/°C	-	-18	-

S2098 Package Dimension



Matching Schematic



L1 = 47nH, L2 = 47nH, L3 = 47nH, C1 = 47pF

Dimensions shown are nominal in millimeters

Body : Al₂O₃

Lid : Kovar, Ni Plated

Termination : Au plating 0.3 ~ 1.0um, over a 1.27 ~ 8.89um Ni Plating

Pin Configuration

	10	Ground	1,6
Input	10	Ground	1,6
Output	5	Others	Ground

3. Typical Performance (at +25°C)

