

1. Features

- Typical 1dB bandwidth of 19.62 MHz
- Low-Loss Filter
- Single Ended Operation
- Ceramic Surface Mount Device(SMD) Package

RoHS Compliant

Tested by SGS Testing Korea

2. Electrical Specifications

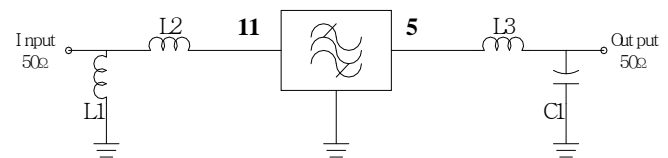
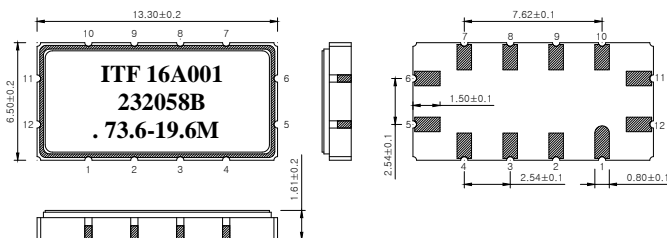
Source and Load Impedance = 50

Operating Temperature : -20°C ~ +70°C		Minimum	Typical	Maximum
Center Frequency (fo)	MHz	-	73.6	-
Insertion Loss	dB	-	12.6	15.0
1dB Bandwidth	MHz	19.2	19.62	-
3dB Bandwidth	MHz	-	20.35	-
40dB Bandwidth	MHz	-	23.8	24.2
Amplitude Ripple (fo ± 9.0075 MHz)	dB	-	0.4	1.0
Group Delay Variation (fo ± 9.0075 MHz)	nsec	-	35	70
Absolute Delay	usec	-	0.98	1.0
Ultimate Rejection	dB	40	45	-
Temperature Coefficient of Frequency	ppm/°C	-	-86	-

Room Temperature : +25°C		Minimum	Typical	Maximum
Insertion Loss	dB	-	12.6	14.5
Amplitude Ripple (fo ± 9.2975 MHz)	dB	-	0.4	1.0
Group Delay Variation (fo ± 9.2975 MHz)	nsec	-	35	70

S1365 Package Dimension

Matching Schematic



L1 = 100nH, L2 = 22nH, L3 = 100nH, C1 = 62pF

Dimensions shown are nominal in millimeters

Body : Al₂O₃

Lid : Kovar, Ni Plated

Termination : Au plating 0.3 ~ 1.0um, over a 1.27 ~ 8.89um Ni Plating

Pin Configuration

Pin Configuration			
Input	11	Ground	6, 12
Output	5	Others	Ground

3. Typical Performance (at +25°C)

