

1. Features

- Typical 1dB bandwidth of 51.0 MHz
- Low-Loss Filter
- Single Ended Operation
- Surface Mounted Package (SMD)

RoHS Compliant

Tested by SGS Testing Korea

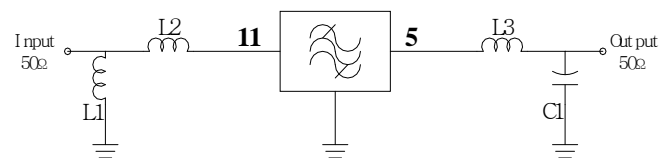
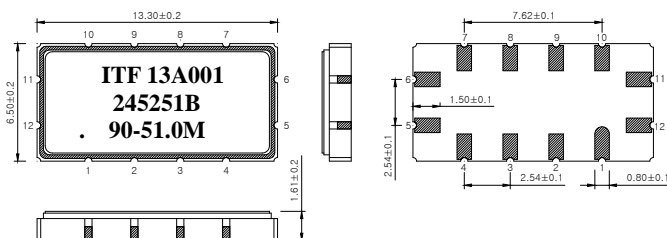
2. Electrical Specifications

Source and Load Impedance = 50

Room Temperature : +25°C		Minimum	Typical	Maximum
Center Frequency (fo)	MHz	89.8	90.0	90.2
Insertion Loss	dB	-	19.5	21.0
1dB Bandwidth	MHz	50.1	51.0	-
3dB Bandwidth	MHz	-	52.5	-
40dB Bandwidth	MHz	-	59.0	60.0
Amplitude Ripple (fo ± 24.0 MHz)	dB	-	0.4	1.0
Group Delay Variation (fo ± 24.0 MHz)	nsec	-	20	60
Absolute Delay	usec	-	0.79	-
Ultimate Rejection	dB	37	42	-
Temperature Coefficient of Frequency	ppm/°C	-	-72	-

S1365 Package Dimension

Matching Schematic



L1 = 82nH, L2 = 5.6nH, L3 = 68nH, C1 = 27pF

Dimensions shown are nominal in millimeters

Body : Al₂O₃

Lid : Kovar, Ni Plated

Termination : Au plating 0.3 ~ 1.0um, over a 1.27 ~ 8.89um Ni Plating

Pin Configuration

Pin Configuration			
Input	11	Ground	6, 12
Output	5	Others	Ground

3. Typical Performance (at +25°C)

