

**1. Features**

- Typical 1dB bandwidth of 15.4 MHz
- Low-Loss Filter
- Single Ended Operation
- Surface Mounted Package (SMD)

**RoHS Compliant**

Tested by SGS Testing Korea

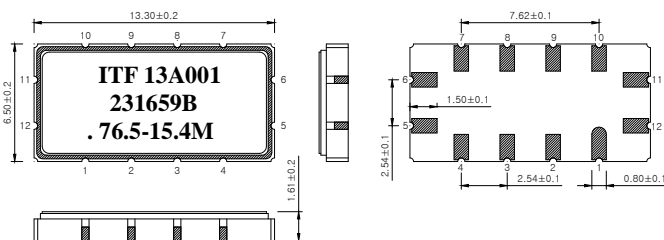
**2. Electrical Specifications**

Source and Load Impedance = 50

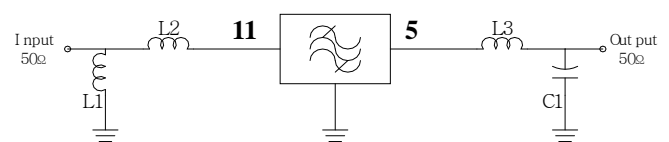
Operating Temperature : 0 °C ~ +80 °C		Minimum	Typical	Maximum
Center Frequency (fo)	MHz	-	76.5	-
Insertion Loss	dB	-	11.2	13.5
1dB Bandwidth	MHz	14.9	15.4	-
3dB Bandwidth	MHz	-	16.15	-
40dB Bandwidth	MHz	-	19.9	20.4
Amplitude Ripple (fo ± 6.82 MHz)	dB	-	0.4	1.0
Group Delay Variation (fo ± 6.82 MHz)	nsec	-	55	90
Absolute Delay	usec	-	0.98	1.0
Ultimate Rejection	dB	40	45	-
Temperature Coefficient of Frequency	ppm/°C	-	-86	-

Room Temperature : +25 °C		Minimum	Typical	Maximum
Center Frequency (fo)	MHz	76.37	76.5	76.63
Insertion Loss	dB	-	11.2	13.0
Amplitude Ripple (fo ± 7.1 MHz)	dB	-	0.4	1.0
Group Delay Variation (fo ± 7.1 MHz)	nsec	-	55	90

**S1365 Package Dimension**



**Matching Schematic**



**L1 = 330nH, L2 = 39nH, L3 = 100nH, C1 = 91pF**

**Pin Configuration**

<b>Input</b>	<b>11</b>	<b>Ground</b>	<b>6, 12</b>
<b>Output</b>	<b>5</b>	<b>Others</b>	<b>Ground</b>

Dimensions shown are nominal in millimeters

Body : Al<sub>2</sub>O<sub>3</sub>

Lid : Kovar, Ni Plated

Termination : Au plating 0.3 ~ 1.0um, over a 1.27 ~ 8.89um Ni Plating

### 3. Typical Performance ( at +25°C )

