

## 1. Features

- Typical 1dB bandwidth of 16.0 MHz
- Low-Loss Filter
- Single Ended Operation
- Surface Mounted Package (SMD)

**RoHS Compliant**

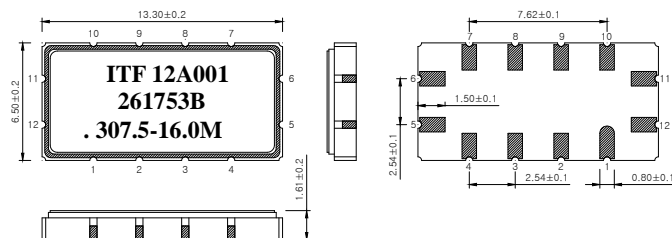
Tested by SGS Testing Korea

## 2. Electrical Specifications

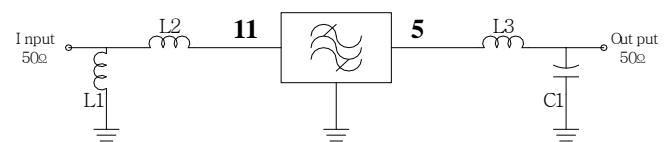
Source and Load Impedance = 50

Room Temperature : +25°C		Minimum	Typical	Maximum
Center Frequency (fo)	MHz	-	307.5	-
Insertion Loss	dB	-	16.0	17.0
1dB Bandwidth	MHz	15.5	16.0	-
3dB Bandwidth	MHz	-	17.2	-
20dB Bandwidth	MHz	-	20.1	-
40dB Bandwidth	MHz	-	22.3	22.8
Amplitude Ripple (fo ± 7.25 MHz)	dB	-	0.5	1.0
Group Delay Variation (fo ± 7.25 MHz)	nsec	-	35	70
Absolute Delay	usec	-	0.72	-
Ultimate Rejection	dB	40	48	-
Temperature Coefficient of Frequency	ppm/°C	-	-18	-

### S1365 Package Dimension



### Matching Schematic



**L1 = 10nH, L2 = 10nH, L3 = 27nH, C1 = 24pF**

### Pin Configuration

Pin Configuration			
Input	11	Ground	6, 12
Output	5	Others	Ground

Dimensions shown are nominal in millimeters

Body : Al<sub>2</sub>O<sub>3</sub>

Lid : Kovar, Ni Plated

Termination : Au plating 0.3 ~ 1.0um, over a 1.27 ~ 8.89um Ni Plating

### 3. Typical Performance ( at +25°C )

